



Addressing College Hunger

Presented By:
Hillary Caron
Sara Medema



**GREATER
CHICAGO**
- **FOOD** -
DEPOSITORY®

Meet the Presenters

Hillary Caron
Senior Policy Advisor



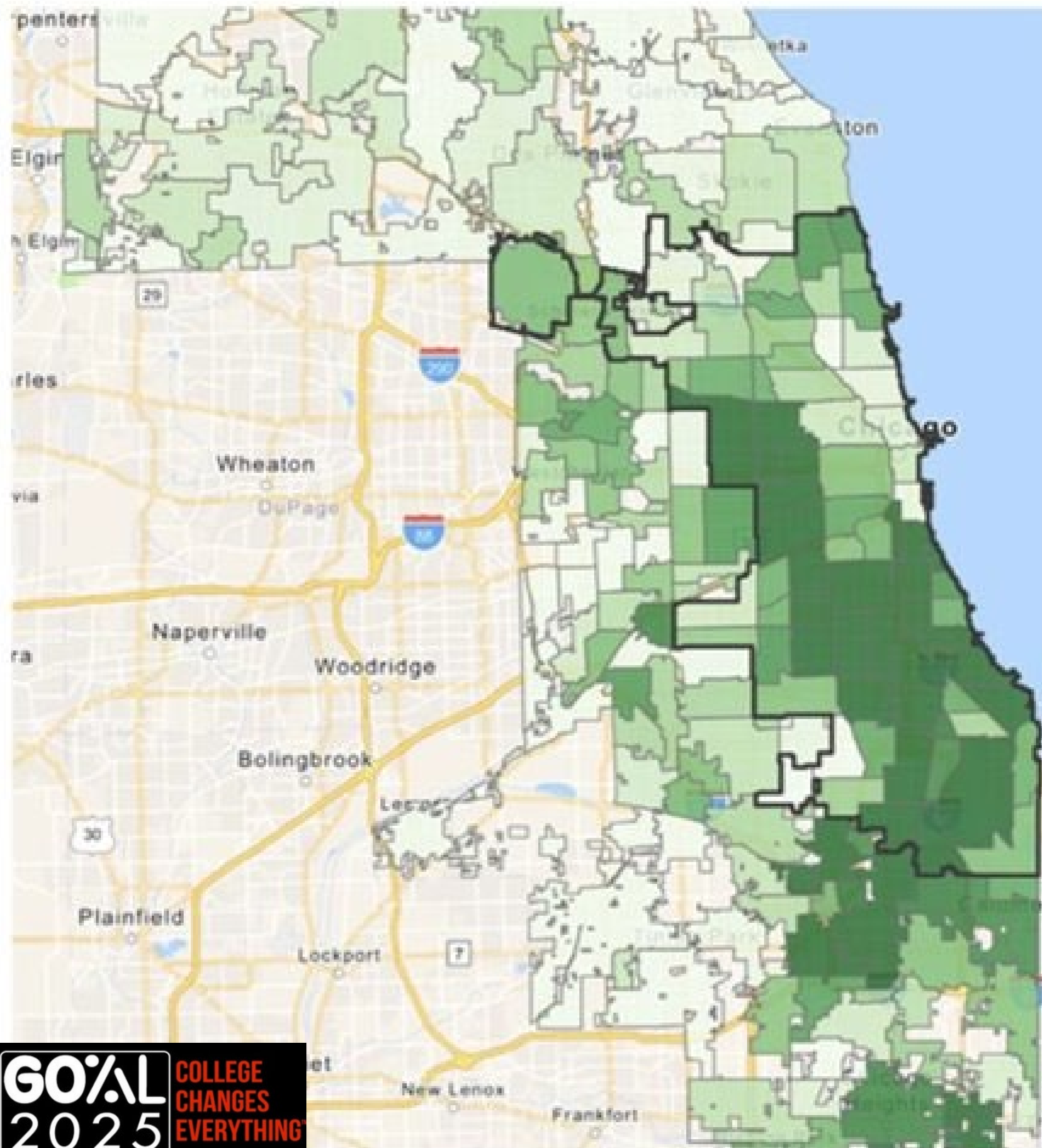
Sara Medema
Mgr. of Policy
Implementation



The Greater Chicago Food Depository

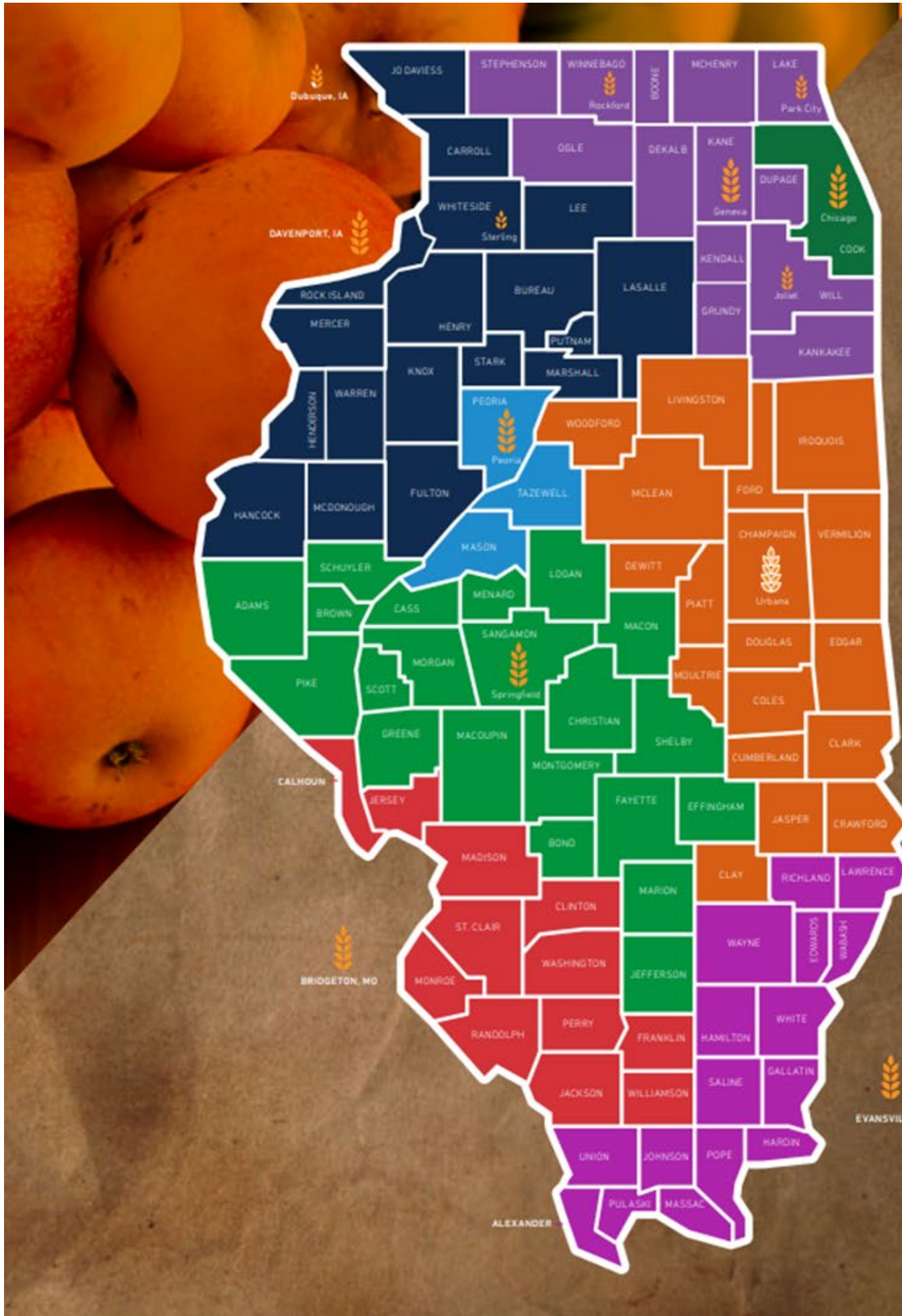
We are Chicago's food bank. We believe a healthy community starts with food.

- We serve over 800+ community-based partners and programs
- Part of the Feeding America national network of food banks (8 serving IL).
- 1 in 5 Chicago area households are experiencing food insecurity.
- Strive to end hunger by connecting neighbors with healthy food and advancing solutions that address the root causes of hunger.



Feeding Illinois

Network of 8 Feeding America Food Banks serving the entire state of Illinois



Food Bank Service Map

The Feeding America network is the nation's largest domestic hunger-relief organization, working to connect people with food and end hunger. See the map for food bank locations near you.

-  Food Bank Main Facilities
-  Central Illinois Foodbank
-  Eastern Illinois Foodbank
-  Greater Chicago Food Depository
-  Northern Illinois Food Bank
-  Peoria Area Food Bank
-  River Bend Foodbank
-  St. Louis Area Foodbank
-  Tri-State Food Bank
-  Food Banks' Branch Locations
-  Food Banks' Partner Distributions Organizations

Temperature Check

Is anyone's school currently...

- Operating a pantry?
- Promoting SNAP?
- Assisting students in applying for assistance?
- Screening students for food insecurity?



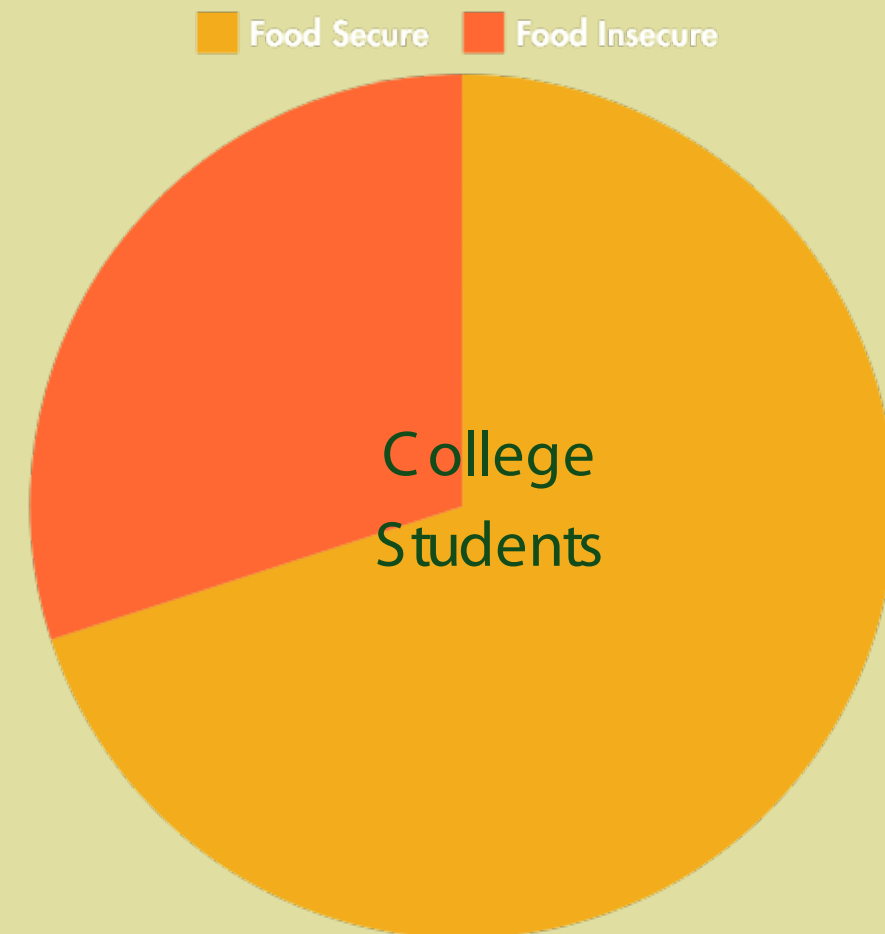
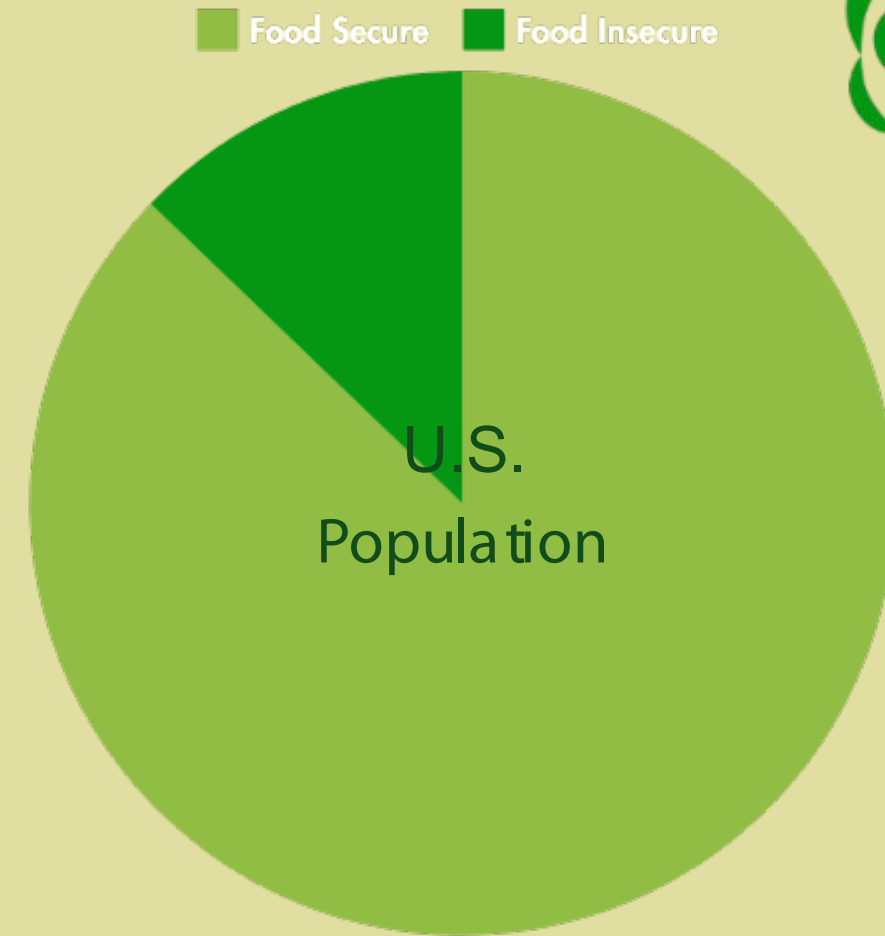


**GREATER
CHICAGO**
- **FOOD** -
DEPOSITORY

The USDA defines food insecurity as...

a household-level economic and social condition of limited or uncertain access to a adequate food.

College students experience higher rates of food insecurity.

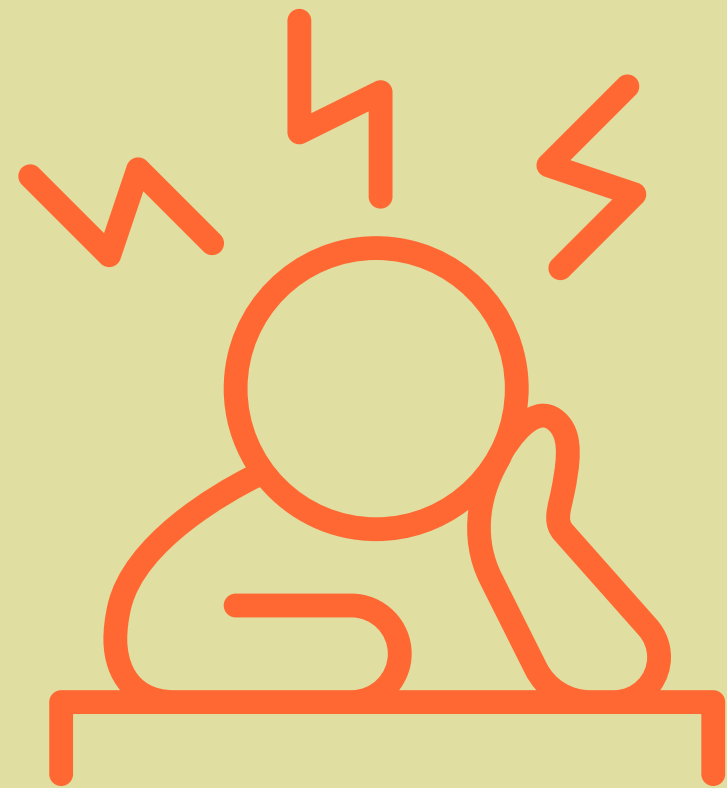


Some students are disproportionately impacted.

This includes:

- Parenting students
- First generation college students
- Pell Grant recipients
- Students with disabilities

Food insecure college students...



are more likely to report indicators of stress and depression.



suffer from lower academic performance



are less likely to complete their degree.

Opening a food pantry on campus...



Can help students meet their immediate needs

Can help solve barriers such as

- Limited access to transportation
- Limited schedules
- Fear and stigma

Can open the door to other services like

- nutritional counseling
- health screening
- benefits assistance

The Food Depository currently partners with 15 local colleges and universities:

City Colleges of Chicago

- Harry S. Truman College
- Harold Washington College
- Richard J. Daley College
- Wilbur Wright College
- Malcolm X College
- Kennedy King College
- Olive Harvey College

- Arrupe College at Loyola University
- Chicago State University
- Morton College
- National Louis University
- Northeastern Illinois University
- Roosevelt University
- South Suburban College
- University of Illinois at Chicago

SNAP benefits could provide a longterm solution.

SNAP, often referred to as Link or food stamps, is the nation's largest anti-hunger program

For every meal that pantries provide, SNAP provides nine

SNAP is an entitlement program, meaning it's there for anyone who is eligible regardless of how many other people are receiving benefits



SNAP has basic eligibility criteria that everyone must meet

You must be a U.S. citizen or have a qualifying immigration status.

You must be a resident of the state where you are applying.

You must fall within the gross income limits listed to the right.

SNAP Household Size	Maximum Gross Monthly Income Standards No QM* in Household	Maximum Gross Monthly Income Standards QM in Household
	165% FPL	200% FPL
1 Person	\$2,005	\$2,430
2 Persons	2,712	3,286
3 Persons	3,419	4,142
4 Persons	4,125	4,998
5 Persons	4,832	5,854
6 Persons	5,539	6,710
7 Persons	6,246	7,566
8 Persons	6,952	8,422
9 Persons	7,659	9,278
10 Persons	8,366	10,134
Each Add'l	\$707	\$856

**Qualifying Member: Elderly (60+) or Disabled*

College students must meet additional eligibility criteria.

A student of higher education may be eligible if:

- They are under age 18 or age 50 or over
- They are physically or mentally disabled
- They work an average of 20 or more hours a week for pay
- They are participating in federal work study
- They are responsible for a child under the age of 6 (only one member in the household may claim this exemption)
- They are responsible for a child between the ages of 6 and 11, and do not have access to adequate childcare
- They are a single parent with a child under the age of 12 (regardless of the availability of childcare)
- They are a TANF recipient
- Be enrolled as a result of participation in the Job Opportunities and Basic Skills program under Title IV of the Social Security Act or its successor program.
- Participating in on the job training
- Are enrolled as a result of one of the following programs:
 - Workforce Innovation and Opportunities Act (WIOA) of 2014;
 - A program under Section 236 of the Trade Act of 1974;
 - A TANF Work and Training Program or SNAP Employment and Training Program;
 - Certain employment and training programs for low-income households that is operated by a State or local government;
 - A program under the Carl D. Perkins Career and Technical Education Improvement Act of 2006

Students who receive more than 50% of their meals through a mandatory or voluntary meal program are not eligible for benefits

Bills have been passed to increase access.

2018

SB351: Made community college students enrolled in Perkins approved course of study eligible for SNAP

2019

SB1641: Added language about SNAP to the notice schools are required to send to MAP-eligible students

2023

HB4201: Requires each public university and community college to employ a benefits navigator and participate in a statewide consortium (facilitated by IBHE and ICCB) to facilitate communication and develop best practices for benefits navigators

HB2528: Directs IBHE to establish a Hunger-Free Campus Grant Program



Map grant eligible students will receive a notice

2024-25 School-Issued Award Notification Language

All schools are required to announce MAP Grant awards to all eligible students enrolled at their institutions, including students who are only eligible for a second semester/second and third quarter MAP award. Schools are required to clearly identify the awards on the award notification as: **State of IL MAP Grant (Est)**.

Schools are also required to include the following information with the award notification:

By applying for financial aid and agreeing to share that information with the Illinois Student Assistance Commission (ISAC) you have been considered for the State of Illinois (IL) Monetary Award Program (MAP) Grant. All MAP-approved institutions are required by the State of Illinois to announce MAP Grant awards to students who are enrolled or intending to enroll at their institution. An award amount is included in your financial aid package if you have met the eligibility criteria.

The MAP Grant award amount is an estimate made by the financial aid office and is identified as a "State of IL MAP Grant (Est)". Please be aware that the number of available MAP Grants is limited by funding levels approved by the Illinois General Assembly and the Governor, and reductions to estimated or actual MAP Grants are possible.

There are also limitations to how long you can continue to receive a MAP Grant. Usage is tracked by the number of credit hours for which you've received MAP benefits and is referred to as MAP Paid Credit Hours (MPCHs). The maximum number of MPCHs that can be received is 135, which is equivalent to approximately four and a half years of full-time enrollment. For your reference, and to learn more about MPCH limitations, you may access a record of your MPCHs, as well as other student resources, through the ISAC Student Portal at studentportal.isac.org.

Eligibility for the need-based MAP Grant award may indicate that you are eligible for assistance with expenses such as food, housing, or child care for dependent children. If you have dependent care expenses, ask the financial aid office about the federal dependent care allowance. For eligibility and application information about the [Supplemental Nutrition Assistance Program \(SNAP\)](#) and the [Child Care Assistance Program](#), contact the [Illinois Department of Human Services](#) at 800-843-6154 or www.dhs.state.il.us. Contact the [Illinois Hunger Coalition](#) Hunger Hotline at 800-359-2163 or www.ilhunger.org.

There is still more that can be done.

Federal legislation

- H.R. 3183/S. 1488 Enhance Access to SNAP (EATS) Act: Remove restrictions on SNAP eligibility for students

Actions at the state level

- Awareness about student eligibility, including nearly all community college students
- Implement benefits navigators and statewide consortia
- Fund HungerFree Campus Grant Program
- Maximize which higher education programs count as equivalent to SNAP E&T

Expanding the definition of Employment and Training Programs could be the key to helping more students.

According to the Code of Federal Regulations:

“(iv) An employment and training program for low-income households that is operated by a State or local government where one or more of the components of such program is at least equivalent to an acceptable SNAP employment and training program component as specified in § 273.7(e)(1). Using the criteria in § 273.7(e)(1), State agencies shall make the determinations as to whether or not the programs qualify.”

Criteria = “improve employability”

Other states have had success.

California

AB1930 passed in 2014: Required CA Dept. of Social Services to identify all potential exemptions to maximize access for college students

AB396 passed in 2021: Created Local Programs that Increase Employability (LPIE) system; requires community colleges and state universities to submit LPIEs for approval

As of 2023, any major or minor that requires a lab or internship is considered an LPIE

Ohio

Any major that leads to an in-demand occupation

Oregon

Students must state what job they plan to pursue after completing school- that's it!!!

We can help you get students connected

The Food Depository offers the following resources

- Trainings on SNAP outreach and application assistance
- The SNAP Outreach Collaborative- a monthly convening for those providing outreach and application assistance
- SNAP and Medicaid application assistance via telephone (Cook County only)
 - Those outside of Cook County can call the IL Hunger Coalition Hotline



Resources

SNAP Application Assistance Hotlines

- Cook County: 773-247-3663 operated by the Greater Chicago Food Depository
- Statewide: 800-359-2163 operated by the Illinois Hunger Coalition

Pantry Inquiries

- Cook County: https://www.chicagosfoodbank.org/partnership_inquiry/
- Statewide: contact us to connect to your local food bank!

Thank you!

Contact Us:

Hillary Caron
hcaron@gcfd.org
773-843-7790

Sara Medema
smedema@gcfd.org
773-843-7786