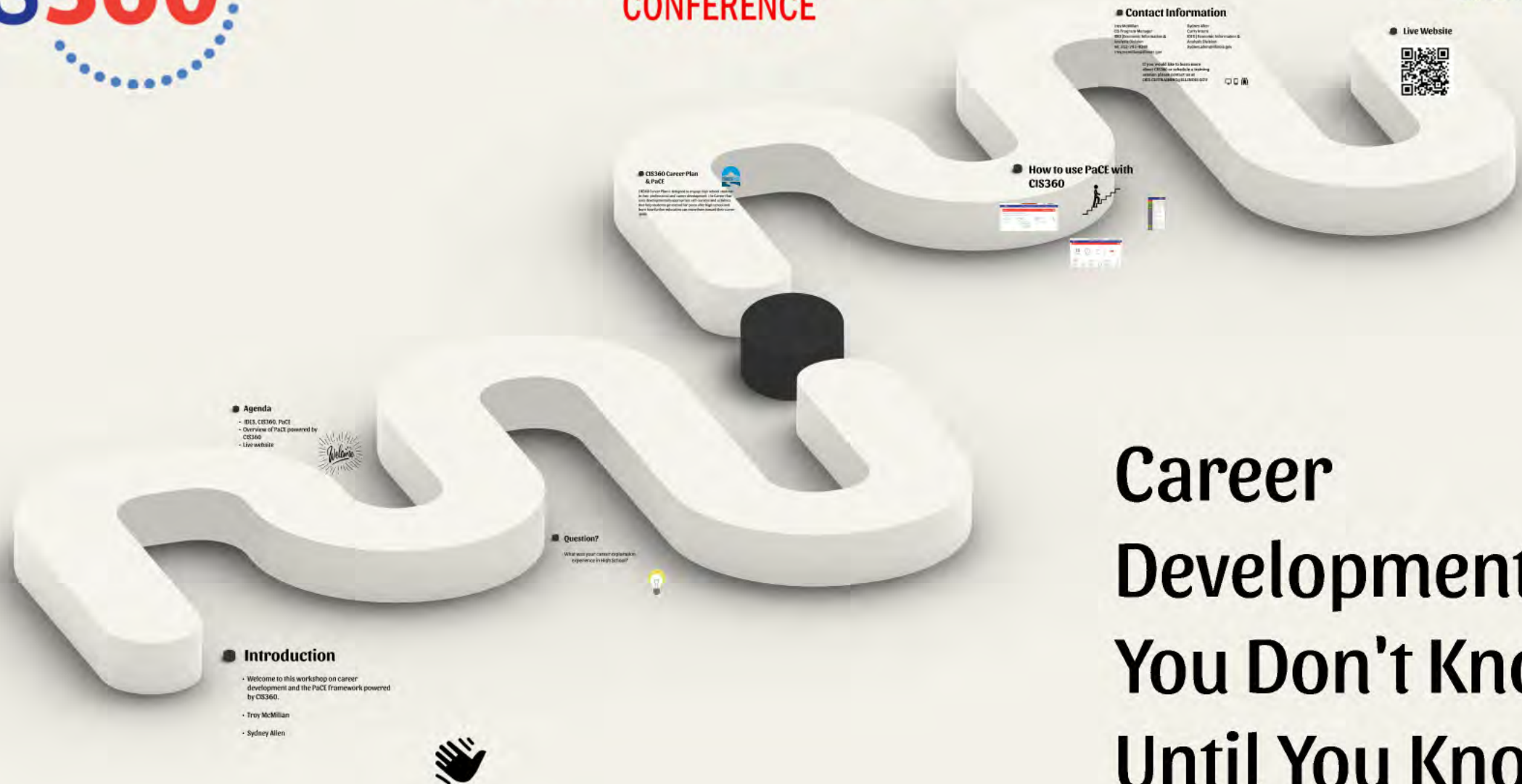




# 2024 COLLEGE CHANGES EVERYTHING<sup>®</sup> CONFERENCE



● **Agenda**  
- BLS, CIS360, PaCE  
- Overview of PaCE powered by CIS360  
- User website



● **Introduction**  
- Welcome to this workshop on career development and the PaCE framework powered by CIS360.  
- Troy McMillan  
- Sydney Allen



● **Question?**  
What was your career development experience like today?

● **CIS360 Career Plan & PaCE**  
CIS360 Career Plans designed to engage high school students in their professional and career development. For career and college preparation, CIS360 provides a comprehensive career plan for students after high school and a PaCE framework for students who are currently in college.



● **How to use PaCE with CIS360**



● **Contact Information**  
Troy McMillan  
CIS Program Manager  
800 University, Administration & Security Division  
M/S 202-215-8300  
troy.mcmillan@ides.gov

If you would like to become a CIS360 user, contact us at 800-233-8300 or visit our website at [www.cis360.org](https://www.cis360.org)

● **Live Website**



# Career Development: You Don't Know Until You Know!

# Introduction

- Welcome to this workshop on career development and the PaCE framework powered by CIS360.
- Troy McMillan
- Sydney Allen



# ● Agenda

- IDES, CIS360, PaCE
- Overview of PaCE powered by CIS360
- Live website





# Question?

What was your career exploration  
experience in High School?



# ● **CIS360 Career Plan & PaCE**



**CIS360 Career Plan is designed to engage high school students in their professional and career development. The Career Plan uses developmentally appropriate self-surveys and activities that help students get excited for plans after high school and learn how further education can move them toward their career goals.**



# How to use PaCE with CIS360



The screenshot shows the 'My Dashboard' page in the CIS360 system. It features a navigation bar with 'My Dashboard', 'Self-Surveys', 'Career Plan', 'Careers', 'Education', 'Employment', and 'Practice Tests'. Below the navigation bar, there are three main sections: 'Career Clusters' (with a link to 'Manufacturing'), 'Careers' (with links to 'Accountants and Auditors', 'Agricultural Scientists', 'Police Officers and Sheriffs', and 'Welders and Solderers'), and 'Programs of Study' (with a link to 'Business Economics').

Icon	Item Name	Status
✓	Career Cluster Survey	✓
🔍	Career Cluster Survey Reflections (HS)	
✓	Career Interest Survey	✓
🔍	Career Interest Survey Reflections	
🔍	Postsecondary Options	
🔍	Coursework	
🔍	Early College Credit Courses	
🔍	Career Goals	
🔍	Personal Goals	
🔍	Community Service/Extracurricular Activities	
🔍	Financial Aid FAQs (HS)	
✓	Reality Check	✓
🔍	Reality Check Reflections (HS)	

The screenshot shows the 'PaCE (10th)' progress page. It displays a total of 19 items, with 4 completed (21%), 0 started, and 15 incomplete. Below this, there are three additional plans: PaCE (10th), PaCE (11th), and PaCE (12th), each with its own progress indicators.

Plan	Completed	Started	Incomplete	Percentage
PaCE (10th)	4	0	17	19%
PaCE (11th)	5	0	23	18%
PaCE (12th)	3	0	29	9%



My Dashboard HSAdminDemo Account

Favorites Self-Survey Results Best Career Matches Reports

To add Favorites to your Dashboard, select the thumbs up as you explore.

**Career Clusters**

- > [Manufacturing](#)

**Careers**

- > [Accountants and Auditors](#)
- > [Agricultural Scientists](#)
- > [Police Officers and Sheriffs](#)
- > [Welders and Solderers](#)

**Programs of Study**

- > [Business Economics](#)



PaCE (9th)



19  
Total



- 4 Completed
- 0 Started
- 15 Incomplete

Continue

Additional plans :

PaCE (10th)

- 4 Completed
- 0 Started
- 17 Incomplete



PaCE (11th)

- 5 Completed
- 0 Started
- 23 Incomplete



PaCE (12th)

- 3 Completed
- 0 Started
- 29 Incomplete





	
	Career Cluster Survey 
	Career Cluster Survey Reflections (HS)
	Career Interest Survey 
	Career Interest Survey Reflections
	Postsecondary Options
	Coursework
	Early College Credit Courses
	Career Goals
	Personal Goals
	Community Service/Extracurricular Activities
	Financial Aid FAQs (HS)
	Reality Check 
	Reality Check Reflections (HS)

# ● Contact Information

**Troy McMillan**  
**CIS Program Manager**  
**IDES | Economic Information &**  
**Analysis Division**  
**Tel: 312-793-9349**  
**Troy.mcmillan@illinois.gov**

**Sydney Allen**  
**Curry Intern**  
**IDES | Economic Information &**  
**Analysis Division**  
**Sydney.allen@illinois.gov**

**If you would like to learn more  
about CIS360 or schedule a training  
session please contact us at  
DES.CISTRAINING@ILLINOIS.GOV**



# ● Live Website





# 2024 COLLEGE CHANGES EVERYTHING<sup>®</sup> CONFERENCE



● **Agenda**  
- BLS, CIS360, PaCE  
- Overview of PaCE powered by CIS360  
- User website

● **Introduction**  
- Welcome to this workshop on career development and the PaCE framework powered by CIS360.  
- Troy McMillan  
- Sydney Allen



● **Question?**  
What was your career exploration experience like today?

● **CIS360 Career Plan & PaCE**  
CIS360 Career Plans designed to engage high school students in their professional and career development. For career and college exploration, self-discovery, and planning. CIS360 Career Plans are available for users after high school and have the ability to be updated and revised throughout the year.

● **How to use PaCE with CIS360**

● **Contact Information**  
Troy McMillan  
CIS Program Manager  
800 University, Northbrook, IL  
60062-1000  
troy.mcmillan@ides.gov

● **Live Website**

# Career Development: You Don't Know Until You Know!